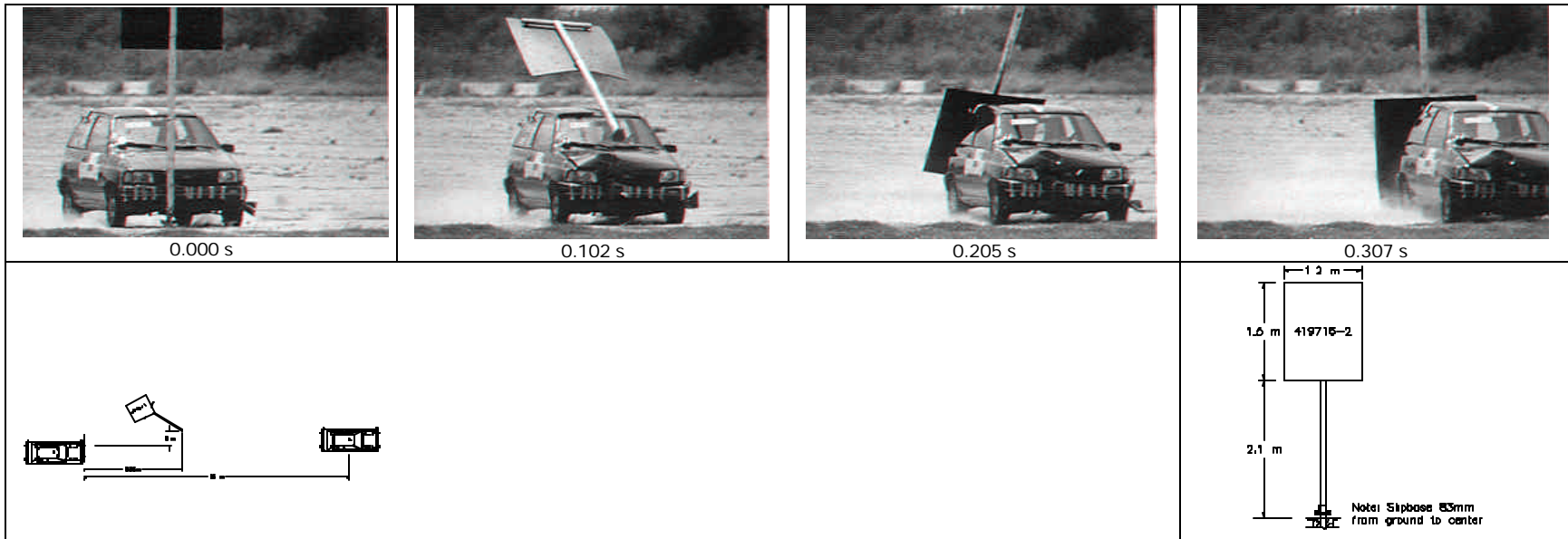


| | | | |
|--|--------------------------------|------------------------------|--|
| 1 General Information | | Impact Conditions | Test Article |
| Test Agency | Texas Transportation Institute | Speed (km/h) | 35.8 (22.3 mi/h) |
| Test No. | 419716-1 | Angle (deg) | 0 |
| Date | 09/05/96 | Exit Conditions | Vehicle Damage |
| Test Article | | Speed (km/h) | 32.6 (52.5 mi/h) |
| Type | Single Slip Base Sign Support | Angle (deg) | 0 |
| Name | Slip-base in Foam Foundation | Occupant Risk Values | Exterior |
| Installation Height (m) | 2.13 (7.0 ft) | Impact Velocity (m/s) | VDS |
| Size and/or dimension and material of key elements | | x-direction | 1.1 (3.6 ft/s) |
| Soil Type and Condition | Standard Soil, Damp | y-direction | 0.6 (2.0 ft/s) |
| Test Vehicle | | Ridedown Accelerations (g's) | Interior |
| Type | Production | x-direction | -0.3 |
| Designation | 820C | y-direction | 0.3 |
| Model | 1990 Ford Festiva | Max. 0.050-s Average (g's) | Post-Impact Behavior |
| Mass (kg) Curb | 847 (1866 lb) | x-direction | -1.0 |
| Test Inertial | 820 (1806 lb) | y-direction | 0.7 |
| Dummy | 75 (165 lb) | z-direction | N/A |
| Gross Static | 896 (1974 lb) | | |
| | | | Debris Scatter Area (m) |
| | | | Width |
| | | | 2.13 (7.0 ft) |
| | | | Length |
| | | | 6.85 (22.5 ft) |
| | | | Maximum Exterior Vehicle Crush (mm) |
| | | | 120 |
| | | | Max. Occ. Compartment Deformation (mm) |
| | | | 0 |
| | | | Max. Roll Angle (deg) |
| | | | 3.1 |
| | | | Max. Pitch Angle (deg) |
| | | | -4.1 |
| | | | Max. Yaw Angle (deg) |
| | | | -1.1 |

Figure 9. Summary of Results For Test 419716-1, NCHRP Report 350 Test 3-60.



| | | | |
|--|--------------------------------|------------------------------|--|
| 1 General Information | | Impact Conditions | Test Article Debris Scatter Area (m) |
| Test Agency | Texas Transportation Institute | Speed (km/h) | Width |
| Test No. | 419716-2 | Angle (deg) | Length |
| Date | 09/05/96 | | |
| Test Article | | Exit Conditions | Vehicle Damage |
| Type | Single sign support | Speed (km/h) | Exterior |
| Name | Slip base sign in foam base | Angle (deg) | VDS |
| Installation Height (m) | 2.13 (7 ft) | | CDC |
| Size and/or dimension and material of key elements | | Occupant Risk Values | Interior |
| Soil Type and Condition | Standard soil, damp | Impact Velocity (m/s) | OCDI |
| Test Vehicle | | x-direction | Maximum Exterior |
| Type | Production | y-direction | Vehicle Crush (mm) |
| Designation | 820C | Ridedown Accelerations (g's) | Max. Occ. Compartment Deformation (mm) |
| Model | 1990 Ford Festiva | x-direction | |
| Mass (kg) Curb | 847 (1866 lb) | y-direction | |
| Test Inertial | 820 (1806 lb) | Max. 0.050-s Average (g's) | Post-Impact Behavior |
| Dummy | 75 (165 lb) | x-direction | Max. Roll Angle (deg) |
| Gross Static | 896 (1974 lb) | y-direction | Max. Pitch Angle (deg) |
| | | z-direction | Max. Yaw Angle (deg) |

Figure 15. Summary of Results For Test 419716-2, NCHRP Report 350 Test 3-61.